

LINXX-2010[®] DATA MAXX

Datamaxx has many years of experience working directly with end users of state law enforcement networks. From this experience, valuable insight has been gained into not only what users want in a network interface, but also how they want it - and especially the unique functions of the state network that are either over and above NCIC, or differ from NCIC.

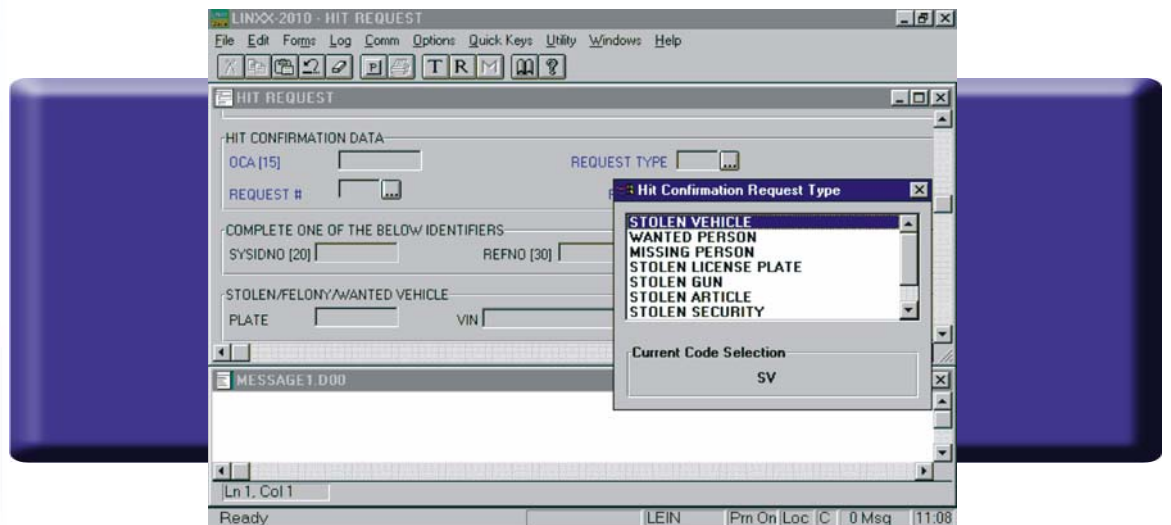
LINXX-2010 is the culmination of this extensive interaction with the end-users. This application provides users with all of the tools necessary to transmit and receive messages on a law enforcement network. Currently in its third major version, LINXX-2010 is a 32-bit application designed for the Microsoft Windows environment. All user functionality is provided from within the LINXX-2010 user interface. A wide range of user-friendly features make the interface both aesthetically pleasing, as well as extremely streamlined. LINXX-2010 incorporates many of the controls that sophisticated users have come to expect of an advanced Windows application including:

- Graphical toolbar that provides single-click access to frequently used commands
- Keyboard shortcuts for frequently used commands
- A comprehensive status bar that provides information on key system functions
- Extensive menu options that provide access to all of the features and functions provided by the application.

In addition to the standard Windows controls, Datamaxx has designed user-friendly data entry screens for network transactions. These screens provide a fill-in-the-blank type of form that isolates the user from having to know the structure of the underlying transaction format. Data fields are presented and grouped in a logical order that is compatible with the user's workflow rather than the order of the transaction string. These transaction forms also provide a myriad of other useful features including:

- Pop-up help for each data field that is available by a single keystroke, or by simply right-clicking the mouse anywhere on the field
- Value lists for all fields for which a known set of acceptable values is available, e.g., vehicle make, model, etc.
- Color coded identification of mandatory fields
- Field labels with complete descriptive titles for each field
- Complete validation of all fields as data is entered, including prompts to the user when an error is encountered

LINXX-2010 also allows free text entry of transactions from within a message window. The message window may be used to enter messages for which no pre-defined transaction form is available, or for transactions (such as Administrative Messages) that allow free-text formatting.



Users are provided with an array of tools to assist them while working within a message window, including:

- A spell-checking utility to locate and correct misspelled words located within administrative messages
- A “find & replace” utility to search for blocks of text, and replace them with other text
- An import and export utility that allows the user to insert the contents of text files for transmission, and save the content of the message window to an external text file

The message windows also provides the ability to view images which have been received within a network message.

One of the most important features of the LINXX-2010 application is the extensive system security. Some of the features of the security sub-system include:

- Individual user identification and passwords for each user
- Optional, pre-defined time limits that allow the operator to log on for only a certain amount of time
- Complete audit trail that records all successful and unsuccessful attempts to access the system

LINXX-2010 provides complete message logging for all transactions sent or received on the workstation. This logging occurs in the background so the operator is not disturbed. In addition to recording all messages, the message log subsystem also provides a search and retrieval utility allowing the user to:

- Scroll sequentially through all messages contained in the log
- Locate any message by searching for text contained within the message, message date and time (range), message type, etc.
- View images that were received within a message
- Print any message in the log
- Copy the message for re-transmittal or inclusion into an external document

LINXX-2010 is available in either a single-user configuration, or as a local area network (LAN). In either configuration, the interface and functionality is identical. Agencies can purchase a single-user system, and as their needs grow the system can be expanded to multiple workstations with no impact to the end-user.

The LAN system utilizes a single connection point to the law enforcement network, thereby reducing the overhead associated with multiple data circuits. In the LAN environment, the system automatically maintains a centralized message log for all workstations and may be configured to permit individual message logs at each client.

The single-user and LAN configurations both allow all messages to be automatically directed to a dedicated printer for hard-copy retention. This printing can occur even if the user-interface is minimized or inactive.

For more information on LINXX-2010 or any other Datamaxx product or service, contact your Sales Representative at 1-800-999-2746.



LINXX-2010 is a trademark of Datamaxx Applied Technologies, Inc. Windows is a trademark of Microsoft Corporation. All other trademarks and/or trade names are the property of their respective owners and are hereby acknowledged as such.

This document describes LINXX-2010 Version 3.5x. Information related to this product is subject to change without notice. Any descriptive information contained herein is provided for reference purposes and in no way represents a commitment on the part of Datamaxx Applied Technologies, Inc.

©1997-2003 Datamaxx Applied Technologies, Inc.

All Rights Reserved

REV: 12.03



Datamaxx
GROUP

www.datamaxx.com